



Testimony of  
Kristin Taddei, Planning Advocate, Casey Trees  
June 5, 2017

Before the Zoning Commission  
on  
**The River Front Development**  
ZC Case No. 17-05: 2100 2nd Street, SW, LLC

Good evening, Commissioners. My name is Kristin Taddei, Planning Advocate with Casey Trees. Casey Trees is a Washington DC-based nonprofit with a mission “to restore, enhance, and protect the tree canopy of the nation’s capital.” To fulfill this mission, we plant trees; monitor the city’s tree canopy; and work with decision makers, developers, and residents to encourage tree planting and protection on both public and private property. We are dedicated to helping the District reach its 40 percent tree canopy goal by 2032. As a city, we will achieve this goal when developments include landscape designs that allow trees to grow large and live long, healthy lives. We are excited to work with the development team to ensure that trees are prioritized in the River Front development at 2100 2<sup>nd</sup> Street, SW.

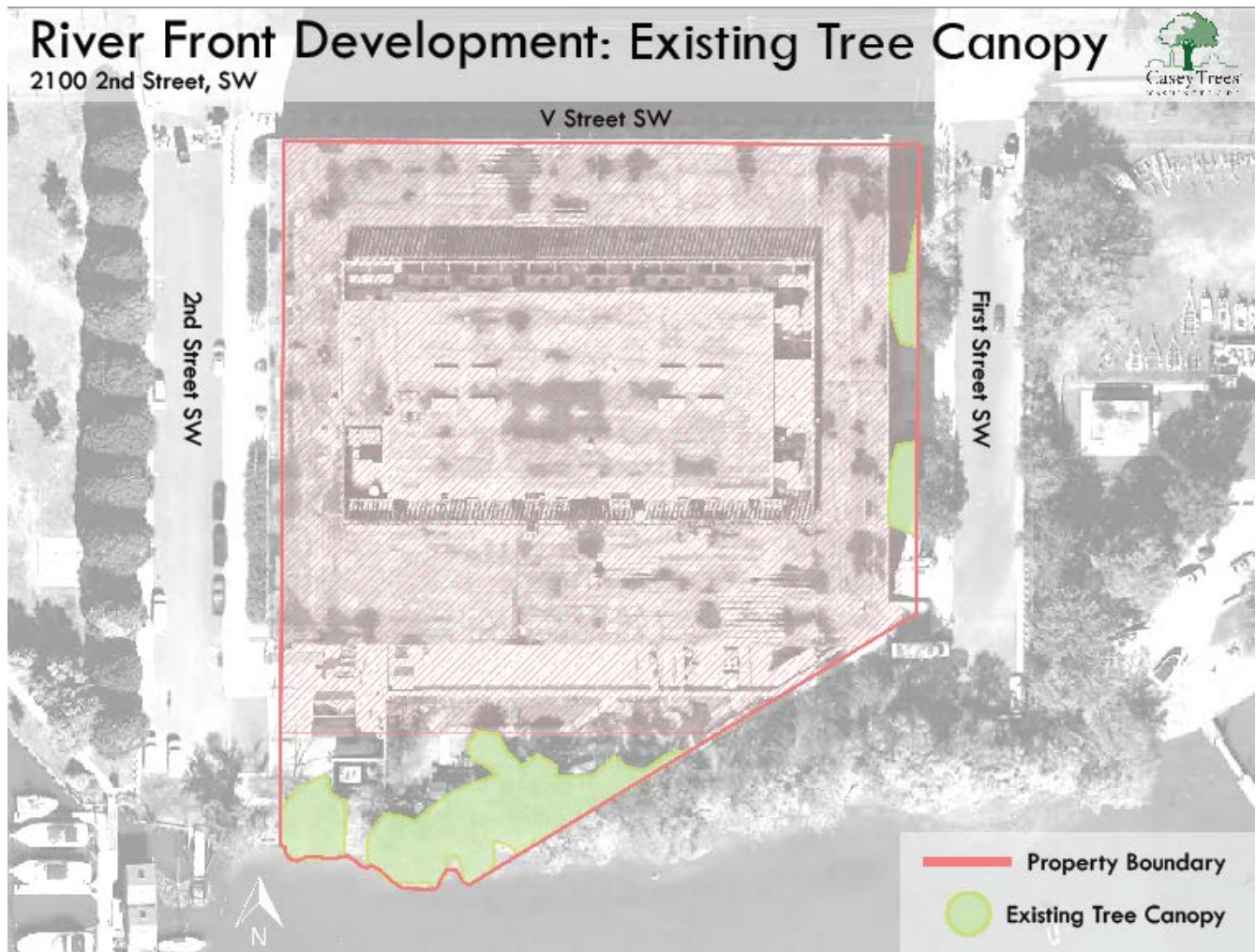
This mixed-used development will replace the former U.S. Coast Guard Headquarters on the Anacostia River. By prioritizing trees in the landscaping plan, the development team has the opportunity to mitigate flooding, improve the ecological health of the Anacostia River, and create an attractive destination for residents and visitors alike.

Though there are trees on this property today, many of them are in poor condition, especially those growing along the riverbank and eastern side of the proposed building (Figure 1). We appreciate that 2100 2<sup>nd</sup> Street, SW LLC will replace these neglected trees with carefully selected, urban-hardy trees that will be well cared for. These trees will ultimately improve the river ecosystem and provide shade to passersby. To continue working toward the city’s [Sustainable DC](#) goal of achieving a 40% tree canopy by 2032, and the [ClimateReady DC](#) actions to reduce flooding and the urban heat island effect, we recommend the following:

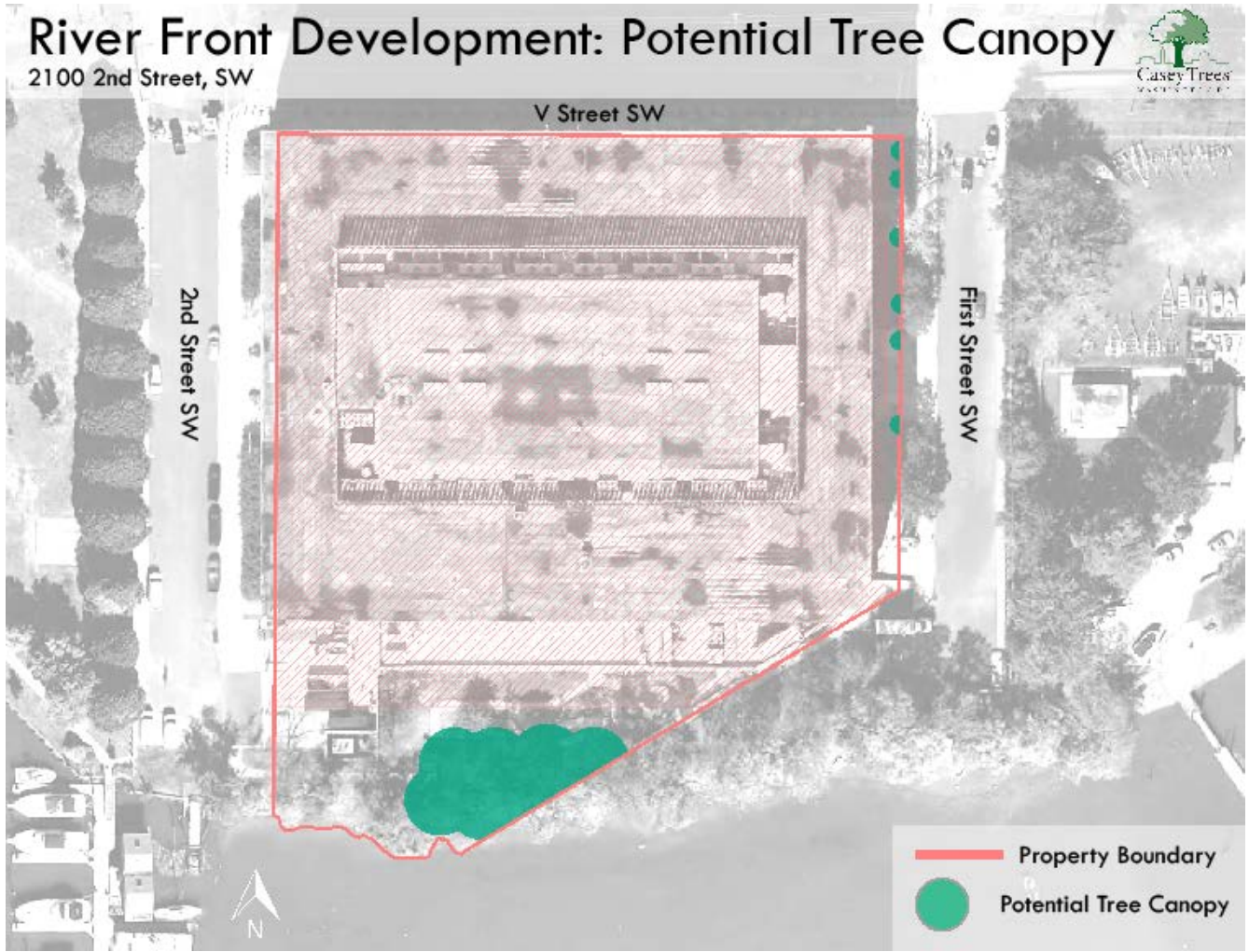
1. **Plant small trees on the eastern edge of the property.** There is an opportunity to plant small trees in the 4’ wide planting strips proposed along the eastern edge of the building. We suggest ensuring there is at least a 3’ soil depth in these planting strips, and spacing 6 small trees at least 10 feet apart (Figure 2).

2. **Select a diverse tree palette.** We are pleased that the developer plans to increase tree diversity by alternating tree species along the property. We also appreciate the concentration of trees near the riverbank, as these trees will promote stormwater retention and infiltration. We request that the development team refer to Casey Trees' [Urban Tree Selection Guide](#) and cross-reference this guide with the Federal Aviation Administration's list of trees in order to select tree species that will comply with the FAA's wildlife standards and perform well in this urban site.

Thank you for the opportunity to testify. We would be happy to work directly with the development team or provide any additional information.



**Figure 1.** Existing tree canopy. The majority of these trees are in poor condition.



**Figure 2.** In addition to the developer’s proposed plantings along the riverfront, we recommend planting small trees in the 4’ wide planting strips along the eastern edge of the building.